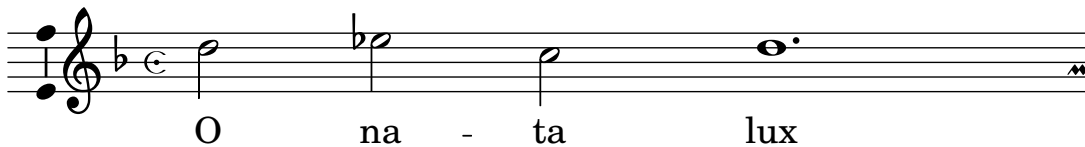


# O nata lux

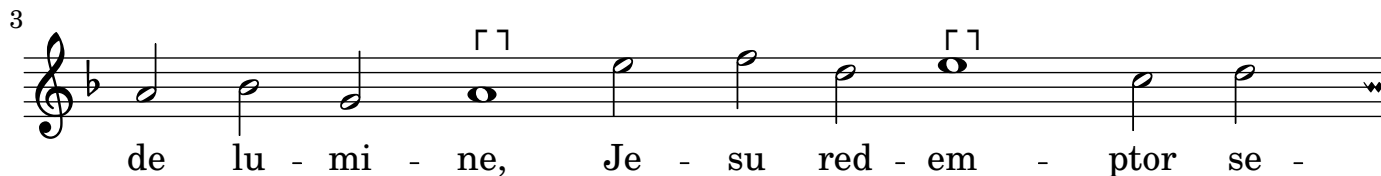
Superius

Thomas Tallis (1505 - 1585)

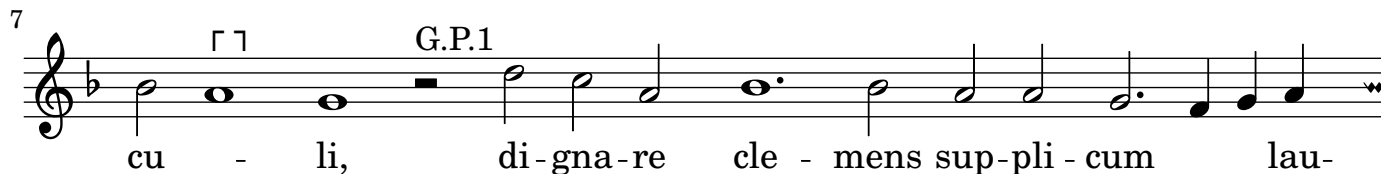
① 2 3 4 5



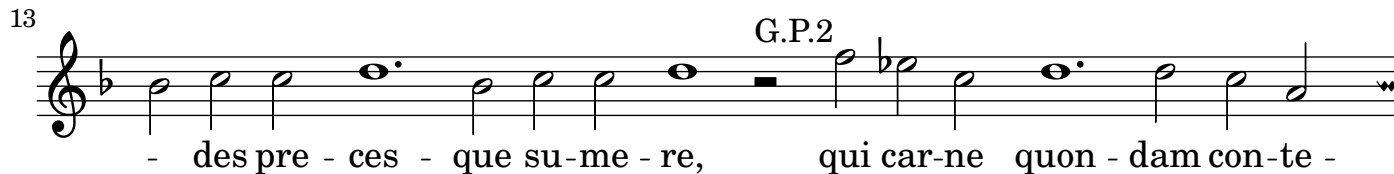
O na - ta lux



de lu - mi - ne, Je - su red - em - ptor se -



cu - li, di - gna - re cle - mens sup - pli - cum lau -



- des pre - ces - que su - me - re, qui car - ne quon - dam con - te -



gi di - gna - tus es pro per - di - tis, nos mem - bra



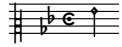
con - fer ef - fi - ci tu - i be - a - ti cor - po - ris.

*Dal segno*

Translation:

O nata lux de lumine,  
Jesu redemptor saeculi,  
Dignare clemens supplicum  
Laudes precesque sumere.  
Qui carne quondam contegi  
Dignatus es pro perditis,  
Nos membra confer effici  
Tui beati corporis.

O Light born of Light,  
Jesus, redeemer of the world,  
with loving-kindness deign to receive  
suppliant praise and prayer.  
Thou who once deigned to be clothed  
in flesh  
for the sake of the lost,  
grant us to be members  
of thy blessed body.



# O nata lux

## Discantus

Thomas Tallis (1505 - 1585)

1 ② 3 4 5

O na-ta lux de lu-mi-ne,  
Je-su red-em-ptor se-cu-li, di-gna-re cle-mens sup-pli-  
cum lau-des pre-ces - que su-me-re, qui car-ne quon -  
dam con-te - gi di-gna-tus es pro per-di - tis,  
nos mem-bra con - fer ef-fi - ci tu - i be - a - ti cor-po - ris.

Translation:

O nata lux de lumine,  
Jesu redemptor saeculi,  
Dignare clemens supplicum  
Laudes precesque sumere.  
Qui carne quondam contegi  
Dignatus es pro perditis,  
Nos membra confer effici  
Tui beati corporis.

O Light born of Light,  
Jesus, redeemer of the world,  
with loving-kindness deign to receive  
suppliant praise and prayer.  
Thou who once deigned to be clothed  
in flesh  
for the sake of the lost,  
grant us to be members  
of thy blessed body.

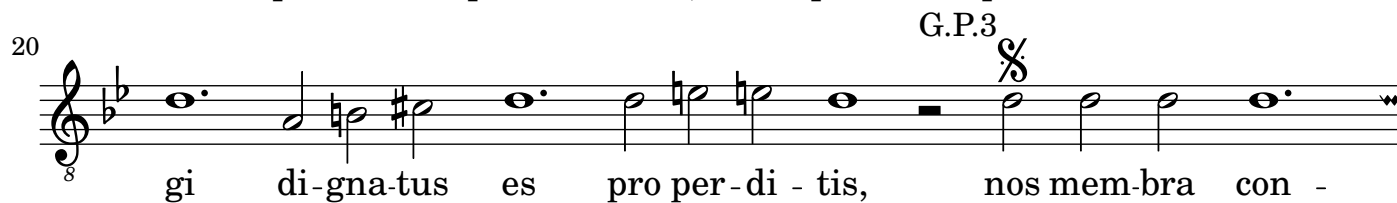
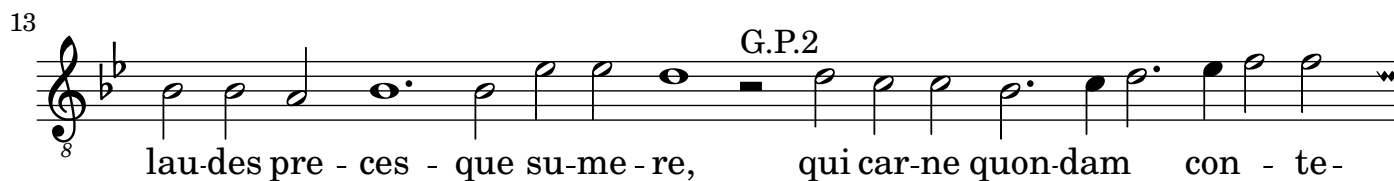


# O nata lux

Contra Tenor

Thomas Tallis (1505 - 1585)

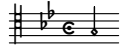
1 2 ③ 4 5



Translation:

O nata lux de lumine,  
 Jesu redemptor saeculi,  
 Dignare clemens supplicum  
 Laudes precesque sumere.  
 Qui carne quondam contegi  
 Dignatus es pro perditis,  
 Nos membra confer effici  
 Tui beati corporis.

O Light born of Light,  
 Jesus, redeemer of the world,  
 with loving-kindness deign to receive  
 suppliant praise and prayer.  
 Thou who once deigned to be clothed  
 in flesh  
 for the sake of the lost,  
 grant us to be members  
 of thy blessed body.



# O nata lux

Tenor

Thomas Tallis (1505 - 1585)

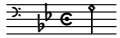
1 2 3 ④ 5

O na-ta lux de lu-mi - ne, Je-su red-  
 em-ptor se - cu - li, di-gna-re cle-mens sup-pli-cum  
 lau-des pre - ces - que su - me - re, qui car-ne quon-dam con-te -  
 gi di-gna-tus es pro per-di - tis, nos mem-bra  
 con - fer ef - fi - ci tu - i be - a - ti cor - po - ris.

Translation:

O nata lux de lumine,  
 Jesu redemptor saeculi,  
 Dignare clemens supplicum  
 Laudes precesque sumere.  
 Qui carne quondam contegi  
 Dignatus es pro perditis,  
 Nos membra confer effici  
 Tui beati corporis.

O Light born of Light,  
 Jesus, redeemer of the world,  
 with loving-kindness deign to receive  
 suppliant praise and prayer.  
 Thou who once deigned to be clothed  
 in flesh  
 for the sake of the lost,  
 grant us to be members  
 of thy blessed body.



# O nata lux

Bassus

Thomas Tallis (1505 - 1585)

1 2 3 4 ⑤



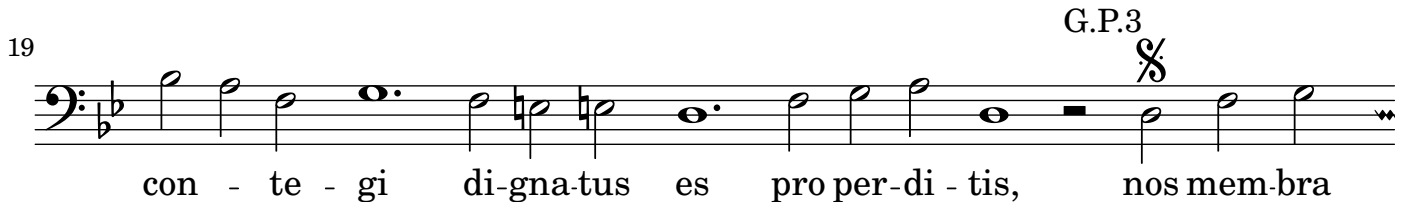
O na-ta lux de lu-mi - ne, Je-su red-



em - ptor se - cu - li, di-gna-re cle-mens sup - pli - cum



lau-des pre - ces - que su-me - re, qui car-ne quon-dam



con - te - gi di-gna-tus es pro per-di - tis, nos mem-bra



con - fer ef - fi - ci tu - i be - a - ti cor - po - ris.

Translation:

O nata lux de lumine,  
 Jesu redemptor saeculi,  
 Dignare clemens supplicum  
 Laudes precesque sumere.  
 Qui carne quondam contegi  
 Dignatus es pro perditis,  
 Nos membra confer effici  
 Tui beati corporis.

O Light born of Light,  
 Jesus, redeemer of the world,  
 with loving-kindness deign to receive  
 suppliant praise and prayer.  
 Thou who once deigned to be clothed  
 in flesh  
 for the sake of the lost,  
 grant us to be members  
 of thy blessed body.

# O nata lux

Thomas Tallis (1505 - 1585)

Superius  
O na - ta lux

Contra Tenor  
O na - ta lux

Tenor  
O na - ta lux

Bassus  
O na - ta lux

3  
de lu - mi - ne, Je - su red - em - ptor se - cu -  
de lu - mi - ne, Je - su red - em - ptor se - cu -  
de lu - mi - ne, Je - su red - em - ptor se - cu -  
de lu - mi - ne, Je - su red - em - ptor se - cu -  
de lu - mi - ne, Je - su red - em - ptor se - cu -

8

li, di - gna - re cle - mens sup - pli - cum lau - des pre - ces -

li, di - gna - re cle - mens sup - pli - cum lau - des pre - ces -

li, di - gna - re cle - mens sup - pli - cum lau - des pre - ces -

li, di - gna - re cle - mens sup - pli - cum lau - des pre - ces - que

li, di - gna - re cle - mens sup - pli - cum lau - des pre - ces -

15

que su - me - re, qui car - ne quon - dam con - te - gi di - gna - tus es

que su - me - re, qui car - ne quon - dam con - te - gi di - gna - tus es pro

que su - me - re, qui car - ne quon - dam con - te - gi di - gna - tus es

su - me - re, qui car - ne quon - dam con - te - gi di - gna - tus es

que su - me - re, qui car - ne quon - dam con - te - gi di - gna - tus es

pro per-di - tis, nos mem-bra con - fer ef-fi - ci tu - i be - a - ti cor - po - ris. *Dal segno*

per-di - tis, nos mem-bra con - fer ef-fi - ci tu - i be - a - ti cor-po - ris. *Dal segno*

<sup>8</sup> pro per-di - tis, nos mem-bra con - fer ef-fi - ci tu - i be - a - ti cor - po - ris. *Dal segno*

<sup>8</sup> pro per-di - tis, nos mem-bra con - fer ef-fi - ci tu - i be - a - ti cor - po - ris. *Dal segno*

pro per-di - tis, nos mem-bra con - fer ef-fi - ci tu - i be - a - ti cor - po - ris. *Dal segno*