



La Brava

Canto

Vincenzo Ruffo

7

13 A

21

27 B

35 C

43

50

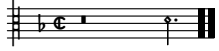
58 D

66 E

73

80 F

86



La Brava

Tenore

Vincenzo Ruffo

8

16

23

30

38

46

54

62

71

78

86

A

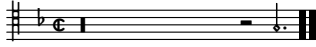
B

C

D

E

F



La Brava

Basso

Vincenzo Ruffo

10
19
27
36
44
51
60
69
77
85

A
B
C
D
E
F

La Brava

Vincenzo Ruffo

The image displays a musical score for the piece "La Brava" by Vincenzo Ruffo. The score is organized into three systems, each consisting of three staves. The first system (staves 1-3) begins with a treble clef, a key signature of one flat (B-flat), and a common time signature (C). The second system (staves 4-6) includes dynamic markings such as *mf* and *f*, and contains chordal annotations labeled "A" and "B" with various accidentals (sharps and flats). The third system (staves 7-9) continues the musical notation with similar dynamics and chordal markings. The notation includes a variety of note values, rests, and articulation marks.

The image displays a page of musical notation for guitar, consisting of 12 staves. The notation is written in treble clef with a key signature of one flat (B-flat). The music is organized into measures, with various chord symbols (C, D, E, F) placed above the staves to indicate the harmonic structure. The notation includes a variety of note values, rests, and accidentals, suggesting a complex melodic and harmonic progression. A key signature change to one sharp (F#) is indicated at the end of the piece.

A musical score consisting of three staves. The top staff is in treble clef, the middle in alto clef, and the bottom in bass clef. All staves have a key signature of one sharp (F#) and a common time signature (C). The music is written in 4/4 time. The top staff begins with a half note G4, followed by quarter notes A4, B4, C5, B4, A4, G4, and a half note F#4. The middle staff begins with a half note G4, followed by quarter notes A4, B4, C5, B4, A4, G4, and a half note F#4. The bottom staff begins with a half note G2, followed by quarter notes A2, B2, C3, B2, A2, G2, and a half note F#2. The piece concludes with a double bar line and repeat dots on each staff.