



65. Heigh ho holiday.

CANTVS.

Antony Holborne

7

12

65. Heigh ho holiday.

ALTUS.

Antony Holborne

5

9

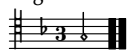
13



65. Heigh ho holiday.

QUINTUS.

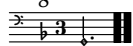
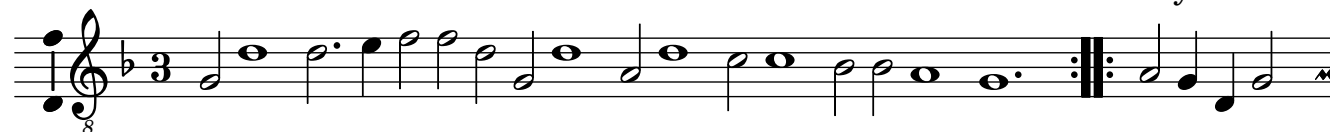
Antony Holborne



65. Heigh ho holiday.

TENOR.

Antony Holborne



65. Heigh ho holiday.

BASSVS.

Antony Holborne



65. Heigh ho holiday.

Antony Holborne

The musical score for "Heigh ho holiday" by Antony Holborne is presented in ten staves. The first five staves are in the key of B-flat major (one flat) and 3/4 time. The first staff is a treble clef with a soprano line. The second staff is a treble clef with an alto line. The third staff is a treble clef with a tenor line. The fourth staff is a treble clef with a bass line, marked with an 8va. The fifth staff is a bass clef with a bass line. The last five staves are in the key of D major (two sharps) and 3/4 time. The sixth staff is a treble clef with a soprano line. The seventh staff is a treble clef with an alto line. The eighth staff is a treble clef with a tenor line. The ninth staff is a treble clef with a bass line, marked with an 8va. The tenth staff is a bass clef with a bass line. The score consists of a series of rhythmic patterns and melodic lines, with some staves featuring rests and other musical notations.

The image displays a musical score for a piece in B-flat major, consisting of two systems of staves. The first system includes a first ending, marked with a double bar line and repeat dots, and a second ending, marked with a double bar line and a fermata. The second system continues the piece with a different melodic line. The score is written for a piano and includes a bass line. The key signature has two flats (B-flat and E-flat), and the time signature is 4/4. The notation includes various note values such as quarter, eighth, and half notes, as well as rests and accidentals (sharps and naturals).

A musical score consisting of five staves. The first four staves use a treble clef, and the fifth staff uses a bass clef. The key signature is one flat (F major or D minor), and the time signature is 4/4. The music is written in a single system and concludes with a double bar line and repeat dots. The notation includes various note values (quarter, eighth, and half notes), rests, and accidentals (sharps and naturals).