

Contents

9r. Fantasia Prima.	2
10. Fantasia Secunda.	6
11. Fantasia Tertia.	8
12. Fantasia Quarta.	12
13. Fantasia Quinta. Sopra la Battaglia	16
14. Fantasia Sexta	20
14. Fantasia Septima	24

Contents

© 2000 Laura E. Conrad serpent-publications.laymusic.org
233 Broadway, Cambridge, MA 02139, USA

This information is free; you can redistribute it and/or modify it under the terms of the GNU General Public License as published by the Free Software Foundation; either version 2 of the License, or (at your option) any later version. This work is distributed in the hope that it will be useful, but WITHOUT ANY WARRANTY; without even the implied warranty of MERCHANTABILITY or FITNESS FOR A PARTICULAR PURPOSE. See the GNU General Public License for more details.

You should have received a copy of the GNU General Public License along with this work; if not, write to the Free Software Foundation, Inc., 675 Mass Ave, Cambridge, MA 02139, USA, or look at their website at <http://www.gnu.org>.

*Santata Prima.
Superius.*

Orlando Lassus.

A musical staff in treble clef with a key signature of one flat (B-flat). The staff contains a sequence of notes: G4, A4, Bb4, C5, Bb4, A4, G4, F4, E4, D4, C4. A double bar line with repeat dots is placed after the final note.

A musical staff in treble clef with a key signature of one flat. The staff contains a sequence of notes: G4, A4, Bb4, C5, Bb4, A4, G4, F4, E4, D4, C4. A repeat sign is placed at the end of the staff.

A musical staff in treble clef with a key signature of one flat. The staff contains a sequence of notes: G4, A4, Bb4, C5, Bb4, A4, G4, F4, E4, D4, C4. A boxed letter 'A' is placed below the staff.

A musical staff in treble clef with a key signature of one flat. The staff contains a sequence of notes: G4, A4, Bb4, C5, Bb4, A4, G4, F4, E4, D4, C4. A repeat sign is placed at the end of the staff.

A musical staff in treble clef with a key signature of one flat. The staff contains a sequence of notes: G4, A4, Bb4, C5, Bb4, A4, G4, F4, E4, D4, C4. A repeat sign is placed at the end of the staff.

A musical staff in treble clef with a key signature of one flat. The staff contains a sequence of notes: G4, A4, Bb4, C5, Bb4, A4, G4, F4, E4, D4, C4. A boxed letter 'B' is placed below the staff.

A musical staff in treble clef with a key signature of one flat. The staff contains a sequence of notes: G4, A4, Bb4, C5, Bb4, A4, G4, F4, E4, D4, C4. A repeat sign is placed at the end of the staff.

Santasia Prima.
Tenor.

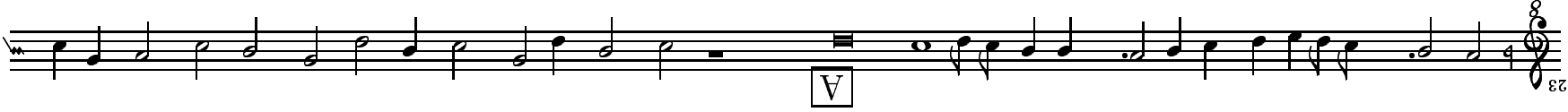
Orlando Lassusio.



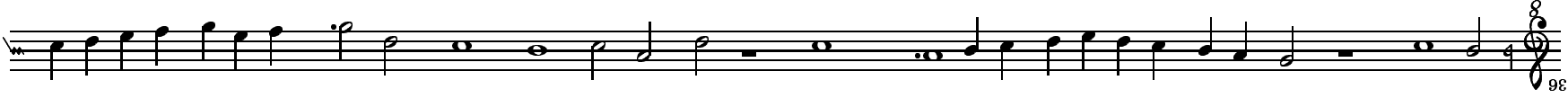
Musical staff 1, measures 1-10. The staff begins with a treble clef, a key signature of one sharp (F#), and a common time signature (C). The music consists of a sequence of eighth and sixteenth notes, ending with a double bar line.



Musical staff 2, measures 11-22. The staff continues the melodic line with various rhythmic values, including eighth and sixteenth notes.



Musical staff 3, measures 23-32. This staff contains a measure with a boxed 'V' annotation below it, indicating a specific rhythmic or melodic feature.



Musical staff 4, measures 33-42. The melodic line continues with a mix of eighth and sixteenth notes.



Musical staff 5, measures 43-52. The staff shows a continuation of the piece's rhythmic and melodic patterns.



Musical staff 6, measures 53-62. This staff includes a measure with a boxed 'B' annotation below it.



Musical staff 7, measures 63-72. The final staff on this page, showing the continuation of the melodic line.



Fantasia Secunda.
Superius.

Giovanni de Antiquis.

7
15
23
32
41

Fantasia Secunda.
Tenor.

Giovanni de Antiquis.

8 16 24 33 41 48 55

¹Original does not have a dot.
²Original is a quarter note

Fantasia Tertia.
Superius.

B. Lupachino.



Musical staff A, starting with a boxed letter 'A' below the staff. It contains a sequence of notes in a treble clef, ending with a double bar line and a key signature change to one sharp (F#).



Musical staff 10, starting with a boxed letter 'A' below the staff. It contains a sequence of notes in a treble clef, ending with a double bar line.



Musical staff 22, starting with a boxed letter 'B' below the staff. It contains a sequence of notes in a treble clef, ending with a double bar line.



Musical staff 32, starting with a boxed letter 'C' below the staff. It contains a sequence of notes in a treble clef, ending with a double bar line.



Musical staff 43, starting with a boxed letter 'C' below the staff. It contains a sequence of notes in a treble clef, ending with a double bar line.



Musical staff 53, starting with a boxed letter 'D' below the staff. It contains a sequence of notes in a treble clef, ending with a double bar line.



Musical staff 62, starting with a boxed letter 'D' below the staff. It contains a sequence of notes in a treble clef, ending with a double bar line.

Fantasia Tertia.
Tenor.

B. Lupachino.

Musical staff with measures 12-23. Measure 12 has a '3' below it. Measure 13 has a boxed 'A' below it. Measure 14 has '(1)(2)' below it. Measure 15 has '(3)' below it. Measure 23 has a boxed 'B' below it.

Musical staff with measures 24-33. Measure 33 has a boxed 'C' below it.

Musical staff with measures 34-43.

Musical staff with measures 44-53. Measure 53 has a boxed 'D' below it.

Musical staff with measures 54-63.

Musical staff with measures 64-73. Measure 73 has a boxed 'D' below it.

¹Original is quarter note

²If the dot is there in the original, it's covered by a smudge

³My original guess about this smudge was that it was a half rest.

Fantasia Quarta.
Superius.

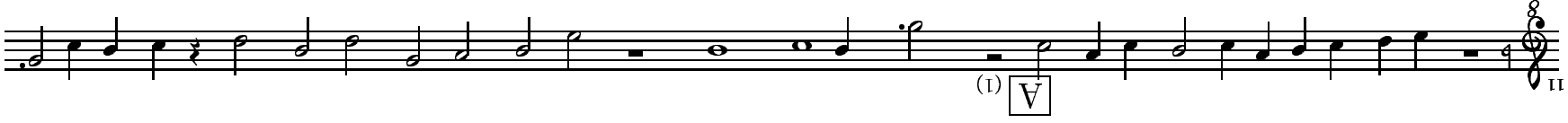
Orlando Lassusio.

12. Fantasia Quarta.



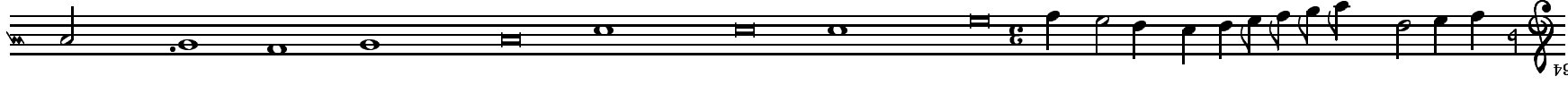
Fantasia Quarta.
Tenor.

Orlando Lassusio.

A musical staff in treble clef, 4/4 time, starting with a key signature of one sharp (F#). It begins with a double bar line and a repeat sign. The melody consists of quarter and eighth notes, ending with a double bar line and a repeat sign. A fermata is placed over the final note.A musical staff in treble clef, 4/4 time. The melody consists of quarter and eighth notes. A box labeled 'V' with '(1)' below it is positioned under the first measure.A musical staff in treble clef, 4/4 time. The melody consists of quarter and eighth notes. A box labeled 'B' is positioned under the second measure.A musical staff in treble clef, 4/4 time. The melody consists of quarter and eighth notes. A box labeled 'C' is positioned under the second measure.A musical staff in treble clef, 4/4 time. The melody consists of quarter and eighth notes. A box labeled 'D' is positioned under the second measure.A musical staff in treble clef, 4/4 time. The melody consists of quarter and eighth notes. A box labeled '(2)' is positioned under the second measure.A musical staff in treble clef, 4/4 time. The melody consists of quarter and eighth notes. A box labeled '(3)' is positioned under the second measure.

Fantasia Quinta. Sopra la Battaglia
Superius.

Gio. Maria Tasso.



13. Fantasia Quinta. Sopra la Battaglia

Musical score for two staves, measures 83-96. The top staff begins at measure 83 and the bottom staff begins at measure 84. Both staves end at measure 96. The music is written in a single system with a repeat sign at the beginning of the top staff. The notation includes various note values, rests, and bar lines.

Fantasia Quinta. Sopra la Battaglia
Tenor.


Gio. Maria Tasso.



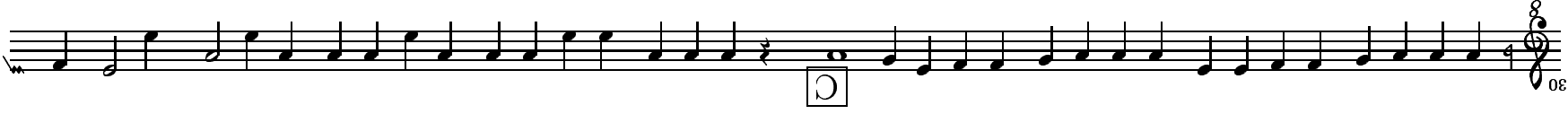
Musical staff 1, measures 1-8. The staff begins with a treble clef, a key signature of one flat (B-flat), and a 4/4 time signature. The music consists of a sequence of eighth and sixteenth notes, ending with a double bar line and repeat dots.



Musical staff 2, measures 9-18. The staff continues the melodic line with various rhythmic values. A boxed letter 'V' is placed below the staff at measure 12.



Musical staff 3, measures 19-28. The staff continues the melodic line. A boxed letter 'B' is placed below the staff at measure 20.



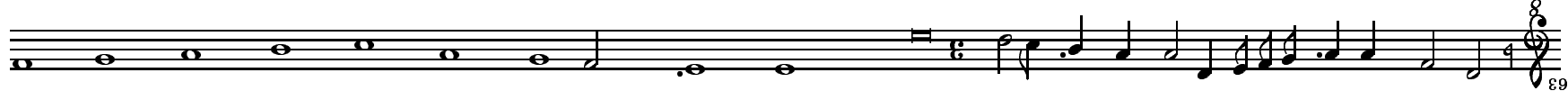
Musical staff 4, measures 29-38. The staff continues the melodic line. A boxed letter 'C' is placed below the staff at measure 34.



Musical staff 5, measures 39-48. The staff continues the melodic line. A boxed letter 'D' is placed below the staff at measure 40.



Musical staff 6, measures 49-58. The staff continues the melodic line with a mix of eighth and sixteenth notes.



Musical staff 7, measures 59-68. The staff concludes the piece with a final cadence. A measure rest is present at the beginning of the staff.

13. Fantasia Quinta. Sopra la Battaglia

Musical score for two staves, measures 82-96. The top staff is numbered 96 and the bottom staff is numbered 82. The music is written in a single system with a treble clef and a key signature of one flat (B-flat). The melody consists of a sequence of eighth and sixteenth notes, with some rests and accidentals. The bottom staff contains a similar melodic line, often in parallel motion with the top staff.

Fantasia Sexta
Superius.

Orlando Lassusio



Musical score for two staves, measures 79-111. The top staff begins with a double bar line and contains measures 79 through 111. The bottom staff begins with a fermata over the first measure and contains measures 79 through 111. Both staves are in a single system and feature a treble clef and a key signature of one sharp (F#). The music consists of a series of eighth and sixteenth notes, with some rests and dynamic markings.

Fantasia Sexta
Tenor.

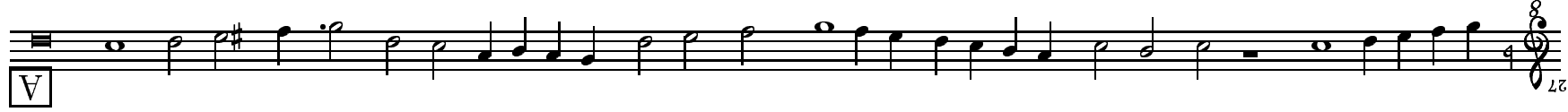
Orlando Lassusio



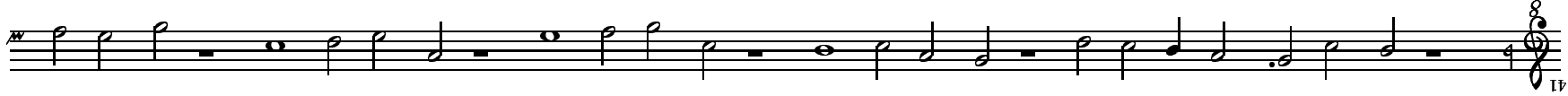
Musical staff 1, measures 1-11. The staff begins with a treble clef, a key signature of one sharp (F#), and a common time signature (C). The music consists of a sequence of eighth and sixteenth notes, with a repeat sign at the end of the first line.



Musical staff 2, measures 12-26. The staff continues the melodic line with various rhythmic values, including eighth and sixteenth notes, and rests.



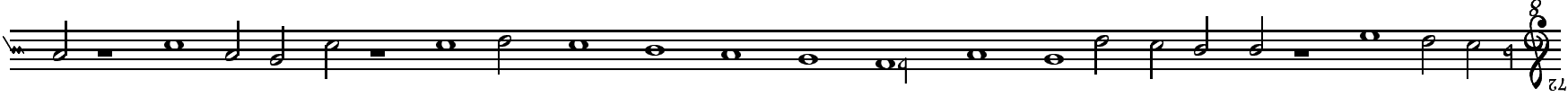
Musical staff 3, measures 27-40. The staff begins with a boxed letter 'A' in the first measure. The music continues with a mix of eighth and sixteenth notes.



Musical staff 4, measures 41-56. The staff continues the melodic development with eighth and sixteenth notes.



Musical staff 5, measures 57-71. The staff begins with a boxed letter 'B' in the 15th measure. The music features a variety of rhythmic patterns.



Musical staff 6, measures 72-87. The staff continues the melodic line with eighth and sixteenth notes.



Musical staff 7, measures 88-93. The staff concludes the piece with a final cadence.

Musical score for two staves, measures 103-117. The top staff is numbered 117 and the bottom staff is numbered 103. The music is written in a single system with a repeat sign at the beginning of the top staff. The notation includes various note values, rests, and a fermata at the end of the top staff.

The image displays a musical score for the piece 'Fantasia Septima Superius' by Orlando Lassus. The score is presented on seven staves, each containing a line of music. The notation includes various note values such as minims, crotchets, and quavers, along with rests and bar lines. The key signature is one sharp (F#), and the time signature is 4/4. The measures are numbered at the end of each staff: 15, 34, 53, 69, 82, and 86. The music features a complex melodic line with frequent chromaticism and a steady rhythmic pulse.

Orlando Lassus

*Fantasia Septima
Superius.*

Fantasia Septima Tenor.

Orlando Lassusio



This page intentionally left blank.